



# Roxtec S EMC transit

Transit for EMC, attached by welding.

The Roxtec S EMC is a multi-cable and pipe transit ensuring electromagnetic compatibility. It is available in different materials and with a single or various combinations of openings. The transit frame is produced in 10mm thick metal and is attached to the structure by welding. There is a choice between Roxtec ES modules for electromagnetic shielding and PE modules that protect against conducted disturbances. The modules adapt to a variety of cable sizes. Roxtec EC (electrical continuity) test sticks are available to help indicate the electrical performance of the transit installation.



- Easy to maintain and inspect
- Provides built-in spare capacity

**Product characteristics**



Fire rated



Watertight



Gas-tight



IP/UL NEMA



EMI protection

**Structure of installation**



Metal

**Mounting type**



Welding

## Ratings & certificates

**Fire**

- A-CLASS according to IMO 2010 FTP Code
- H-CLASS according to IMO 2010 FTP Code + HC fire load curve

**Tightness**

- Gas: 2.5 bar (catastrophic)
- Water: 4 bar (catastrophic)
- IP 66/67

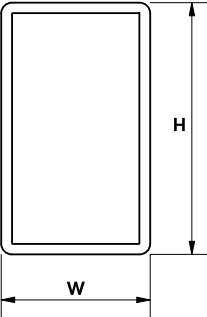
**Supports**

- Electromagnetic shielding
- Potential equalization

## Frame dimensions

in/lbs

The frame variants below are a limited selection. For the full range of frames and configurations, please visit [roxtec.com](https://www.roxtec.com).

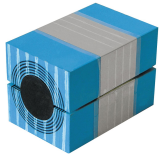


Product	Frame openings	Packing space	External dimensions WxHxD	Aperture dimensions w x h	Weight	Art. no
S 6x1 ALU	1	4.724 x 7.087	5.531 x 9.37 x 2.362	5.63(+0.039/-0.039) x 9.449(+0.039/-0.039)	2.5	S006000000131
S 6x1 PRIMED	1	4.724 x 7.087	5.531 x 9.37 x 2.362	5.63(+0.039/-0.039) x 9.449(+0.039/-0.039)	7.3	S006000000112
S 6x1 AISI316	1	4.724 x 7.087	5.531 x 9.37 x 2.362	5.63(+0.039/-0.039) x 9.449(+0.039/-0.039)	7.3	S006000000121
S 6x2 ALU	2	4.724 x 7.087	10.669 x 9.37 x 2.362	10.748(+0.039/-0.039) x 9.449(+0.039/-0.039)	4.2	S006000000231
S 6x2 AISI316	2	4.724 x 7.087	10.669 x 9.37 x 2.362	10.748(+0.039/-0.039) x 9.449(+0.039/-0.039)	12.1	S006000000221
S 6x2 PRIMED	2	4.724 x 7.087	10.669 x 9.37 x 2.362	10.748(+0.039/-0.039) x 9.449(+0.039/-0.039)	12.1	S006000000212
S 6x3 PRIMED	3	4.724 x 7.087	15.807 x 9.37 x 2.362	15.906(+0.039/-0.039) x 9.449(+0.039/-0.039)	17	S006000000312
S 6x3 AISI316	3	4.724 x 7.087	15.807 x 9.37 x 2.362	15.906(+0.039/-0.039) x 9.449(+0.039/-0.039)	17	S006000000321
S 6x3 ALU	3	4.724 x 7.087	15.807 x 9.37 x 2.362	15.906(+0.039/-0.039) x 9.449(+0.039/-0.039)	5.7	S006000000331



# Sealing components

## Sealing components



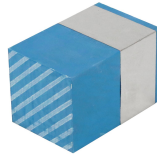
RM ES module with  
Multidiameter™



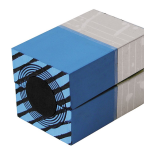
Lubricant



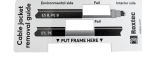
Wedge & Wedgekit ES



RM ES solid compensation  
module



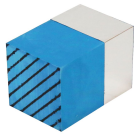
RM PE module with  
Multidiameter™



Accessories ES and BG



Holder tools



RM PE solid compensation  
module



Wedge & Wedgekit



Stayplate



ES sealing kit



Welding tools

For detailed information, please visit [roxtec.com](https://www.roxtec.com).

The product information provided by Roxtec does not release the purchaser of the Roxtec system, or part thereof, from the obligation to independently determine the suitability of the products for the intended process, installation and/or use.

Roxtec gives no guarantee for the Roxtec system or any part thereof and assumes no liability for any loss or damage whatsoever, whether direct, indirect, consequential, loss of profit or otherwise, occurred or caused by the Roxtec systems or installations containing components not manufactured by an authorized manufacturer and/or occurred or caused by the use of the Roxtec system in a manner or for an application other than for which the Roxtec system was designed or intended.

Roxtec expressly excludes any implied warranties of merchantability and fitness for a particular purpose and all other express or implied representations and warranties provided by statute or common law. User determines suitability of the Roxtec system for intended use and assumes all risk and liability in connection therewith. In no event shall Roxtec be liable for indirect, consequential, punitive, special, exemplary or incidental damages or losses.

The Roxtec products are offered and sold in accordance with the conditions of the Roxtec General Terms of Sales. The latest version of the Roxtec General Terms of Sales can be downloaded from <https://www.roxtec.com/en/about-us/about-roxtec/general-terms-of-sales/>

We reserve the right to make changes to the product and technical information without further notice. Any errors in print or entry are no claims for indemnity. The content of this publication is the property of Roxtec International AB and is protected by copyright.

This document was generated on: 2024-04-27